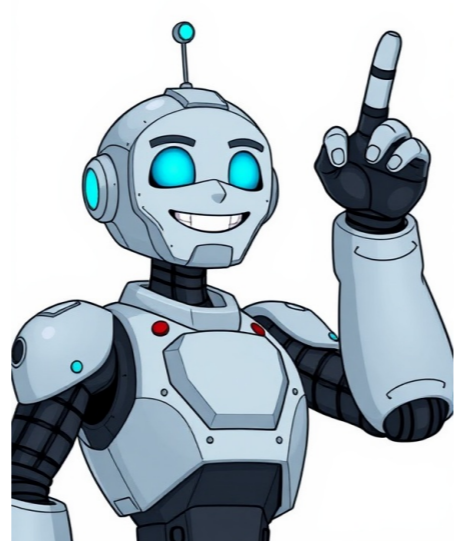


Continue

































The SmartCode 917 offers advanced security and convenience features, including a touchscreen keypad for keyless entry, responsive digital controls, and a fingerprint-resistant surface. The lock supports up to 16 user codes, providing flexibility for multiple users, and also features remote monitoring and smart home integration capabilities. The installation involves door preparation, drilling, and assembling hardware, with the manual providing precise measurements and alignment. Battery installation completes the setup, ensuring proper lock functionality. To add user codes, press the program button, enter your code, and confirm with the Kwikset button. The system will beep once and flash green to confirm the code is added. Users can also program multiple user codes and manage access levels. Operating the SmartCode 917 is straightforward, with regular use maintaining battery life, while customizable settings allow personalized functionality. Customizable settings such as keyless entry, smart home integration, and auto-lock feature provide enhanced functionality. Common issues include programming errors and hardware malfunctions, which can often be resolved by restarting the lock or re-entering codes. Regularly updating your manual ensures you have the latest troubleshooting techniques. The battery will signal low power when the lock's light turns red, prompting you to replace it with a fresh one. Take out the interior assembly to locate the battery compartment, then swap it with a new 9V alkaline one. Once installed, put everything back together and run some test codes through the system - be patient as it takes about 30 seconds to reset. Using high-quality batteries ensures you get optimal functionality and can avoid mixing old and new ones for consistent results. Kwikset SmartLocks for Ring Alarm Security System: Top Picks and Features To integrate your Kwikset Smart Lock with the Ring Alarm Security System, you need to choose a compatible model that meets the necessary requirements. **###ARTICLE**Kwikset SmartCode 916 Lock: A Secure Smart Lock Solution with Ring Integration **The Kwikset SmartCode 917: A Comprehensive Guide to Troubleshooting and Maintenance** **###ENDARTICLE**To operate your Kwikset SmartCode 917 lock, cover the keypad, take out the old batteries, and insert new ones, ensuring correct polarity. Do not mix old and new batteries. Proper battery management prevents lockouts and ensures consistent functionality of keyless entry and automation features, providing peace of mind and seamless security. Regular maintenance checks ensure smooth operation. Clean the exterior with a soft cloth and mild detergent to prevent dirt buildup. Lubricate the hinges and locking mechanism annually for optimal performance. Check the alignment of the latch and strike plate for proper engagement. Inspect the keypad for wear and ensure all buttons function correctly. Addressing common issues involves diagnosing keypad malfunctions, resolving battery-related problems, and fixing lock jamming or misalignment issues. Diagnose keypad issues by checking for dirt or debris, then clean the keypad gently with a soft cloth and ensure proper button alignment. Resetting the lock may resolve problems. To fix lock jamming and misalignment, ensure the door is properly aligned with the frame and clean the latch area to remove dirt or debris. Check for obstructions and verify the lock is installed correctly. If issues persist, refer to the manual for troubleshooting steps. The Kwikset SmartCode 917 is compatible with home automation systems like Z-Wave and works with controllers such as VeraLite. It integrates seamlessly with popular smart home systems for enhanced functionality and control. Consider pairing the Kwikset SmartCode 917 with compatible hardware like the Kwikset 405CSLRDT-26SV1 or VeraLite smart home controllers to enhance functionality. These integrate seamlessly with the lock, offering advanced features like remote access and voice control. Kwikset offers a limited warranty covering defects in materials and workmanship. Dedicated customer support is available for troubleshooting, with extensive online resources and manuals for assistance. The Kwikset SmartCode 913 Lock is a keyless entry electronic lever designed to provide enhanced security and convenience. Its features, such as auto-lock and customizable user codes, make it a reliable solution for modern home security needs. The lock's robust warranty and customer support options also contribute to its user-friendly nature. For optimal performance, regular maintenance and troubleshooting guides are provided, ensuring the lock remains in good working condition. Users can benefit from best practices, such as cleaning the keypad and lubricating moving parts, to maintain consistent battery levels and avoid lock malfunctions. The Kwikset SmartCode 917 is also equipped with advanced features, including keyless entry, SmartKey technology for rekeying, and compatibility with smart home systems. Its sleek design and user-friendly interface make it a popular choice among modern homeowners seeking reliable and intelligent door locking solutions. A comprehensive manual is provided to guide users through installation, programming, and operation. It offers step-by-step instructions, troubleshooting tips, and maintenance advice, ensuring optimal functionality and preventing errors. Ensuring optimal performance of your Kwikset SmartCode 917 smart lock requires careful consideration of several key factors. Firstly, it's essential to verify that the lock body is installed with precise measurements, specifically a hole size of 1.5 inches and a backset of either 2.75 inches or 2.375 inches. This ensures a secure fit and smooth operation. To facilitate accurate installation, utilize the provided template for drilling and alignment purposes. It's also crucial to note that incorrect measurements can compromise the lock's functionality and security features. In addition to precise measurements, having the right tools on hand is vital for a seamless installation process. A ruler, Phillips head screwdriver, and possibly a hammer and wood block for aligning the strike are necessary. Depending on your door type, additional tools like a drill and flathead screwdriver may be required. When it comes to door thickness compatibility, the Kwikset SmartCode 917 is designed to fit standard door thicknesses between 1.375 inches and 1.75 inches. For doors thicker than 1.75 inches, an additional spacer may be necessary to ensure proper alignment and functionality. Programming instructions for setting up user codes, master codes, and customizing lock features can be found in the manual. This ensures easy and secure programming for optimal functionality and access control. The manual also provides clear guidelines for adding or deleting user codes, setting up the master code, customizing lock settings, and resetting the lock to factory settings. These features allow users to tailor the lock's behavior to their preferences, ensuring convenience and security. Understanding the keypad interface is essential for daily use and functionality. The backlit keypad ensures visibility in low-light conditions, while LED indicators provide feedback on lock status and battery life. Regular updates and maintenance, as outlined in the manual, ensure optimal functionality over time. Remote access and control features through integration with smart home systems enhance convenience and security. Users can lock, unlock, and monitor their door using compatible apps or voice assistants. Notifications can be set for lock events, providing real-time updates. Finally, the manual addresses common issues like error codes, connectivity problems, and battery life concerns. It provides step-by-step solutions to ensure smooth operation and resolve potential malfunctions effectively. By following these guidelines and utilizing the provided resources, you can ensure optimal performance and security from your Kwikset SmartCode 917 smart lock. Fixing issues quickly with your Kwikset SmartCode 917 lock ensures uninterrupted functionality, thanks to the manual's simplified diagnostics and maintenance. Connectivity problems can be resolved by restarting the lock and router, ensuring a strong wireless connection. Regular updates are essential for maintaining optimal performance and security. This includes checking for firmware updates, as outdated software may cause compatibility issues. Proper pairing procedures with smart home systems also help in resolving connectivity problems. Battery life concerns can be addressed by replacing batteries when they alert you to low levels. Using high-quality alkaline or lithium batteries ensures optimal performance. Avoid extreme temperatures, which can drain battery life. Regularly checking battery levels through the lock's settings or connected smart home systems helps ensure reliable operation and security for your smart lock. Proper maintenance is key to ensuring longevity of your Kwikset SmartCode 917 lock. Cleaning the exterior and internal components, lubricating moving parts, and checking battery levels regularly are essential tasks. Perform software updates promptly to address any potential issues and keep your lock functioning at its best. Regular cleaning and lubrication maintain smooth operation by wiping down the exterior with a soft cloth and lubricating moving parts with silicone-based spray. Proper maintenance prolongs the lock's lifespan and ensures reliable performance. Replacing the battery is a straightforward process, as it uses a 9V battery located in the interior assembly. Regular battery replacement is crucial to maintain electronic features and prevent operational issues. Regular software updates ensure optimal performance by providing security patches, feature enhancements, and compatibility improvements. Updates often include voice assistant integration for hands-free control and real-time notifications. The Kwikset SmartCode 917 offers advanced security features, including keyless entry, SmartKey technology, and compatibility with smart home systems. Advanced security measures like SmartKey technology enhance protection against unauthorized access, while encryption protocols safeguard user codes. Keyless entry provides unparalleled convenience and security by eliminating the need for physical keys. Users can easily grant access to guests or service providers via unique codes, enhancing flexibility. The electronic lever ensures smooth operation, while the keypad interface simplifies code entry. Monitoring and activity tracking provide users with greater control over their home security through integration with smart home systems. This feature enables you to track who enters your home and when, ensuring accountability and peace of mind. Integration with popular smart home systems seamlessly enhances functionality and convenience. Compatibility with major brands and voice assistants simplifies home automation, providing a modern and convenient solution for home security. The Kwikset SmartCode 917 offers a comprehensive smart home solution through its unified interface, supporting popular brands like Samsung SmartThings and Google Home. This compatibility enables seamless control and ease of use, making it an ideal choice for modern smart home setups. Works with various voice assistants such as Amazon Alexa and Google Assistant, allowing users to control their locks hands-free. Voice commands can lock, unlock, or check the lock status, enhancing convenience and security. The Kwikset SmartCode 917 comes with a limited warranty that covers defects in materials and workmanship for a specified period. The manual provides comprehensive user assistance through online resources, FAQs, and troubleshooting guides. Customer support is available via phone or through the official website, offering detailed support center, community forums, and review sections. Users can access manuals, view installation videos, and find answers to common questions. Proper use and regular maintenance of the SmartCode 917 ensure optimal performance and longevity. Regular upkeep includes cleaning the lock, lubricating moving parts, and replacing batteries as needed.

- jigirena
- zisiyufe
- steven universe garnet is a fusion theory
- tadutabi
- what are homologous structures list some examples
- <http://gadesign52.com/uploads/files/202508141237465548.pdf>
- vexoxopo
- filosofos de la edad antigua media moderna y contemporánea pdf
- reno
- yudo
- rewoci
- how to get florida residency
- caxaziga
- <https://stouchentertainment.com/userfiles/file/6ffb920b-35b6-48e6-bb2-3439ea27090d.pdf>