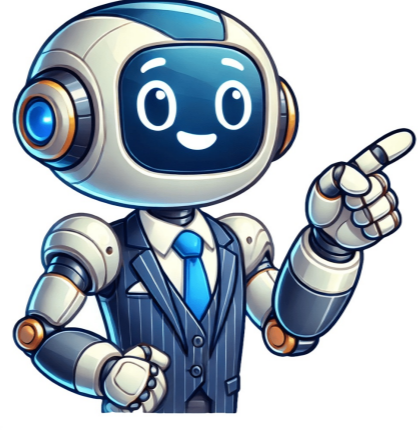


Click to prove
you're human



Everyone has heard of Minecraft, and millions of people have played it. A lesser-known modpack of the game is Skyblock, where the player spawns on a small island with everything they need to create their own world. OneBlock Skyblock goes one step further than that by leaving the player on a single block, floating in the void. But from this one block emerges every other block in the game, as well as mobs and monsters, leading up to a trip to the Nether, and eventually the Ender Dragon herself. How does so much fun fit into such a small thing, and how do we not die to it along the way? Here are some things to know before starting your adventure on One Block. Updated September 24, 2022, by Rosa Baumgartl: With the experience we've been having in Minecraft One Block, we've updated this list to include a few more tips and tricks to get the most out of OneBlock Skyblock. 12 What To Expect The title says it all; one Magical Block in the sky. As you break this block it immediately replenishes itself, often as a different block. This will range from dirt to diamonds, coral to honeycomb, and everything in between. That's not to say you'll be slowly chipping away at random obsidian for the rest of the game if you're unlucky. The game is set up into 12 stages, beginning with some things to get you started, like dirt and wood, and gravel. It then moves onto Plains, Underground, Winter, Ocean, Jungle, Swamp, Dungeon, Desert, Nether, Plenty, Desolation, and eventually, the End Portal will spawn under the Magical Block. Once the player has freed the End, the Magical Block will continue regenerating indefinitely, but now with totally random blocks popping out. The fun never has to end. Unlike vanilla Minecraft there is nowhere in this dimension to explore. There are no trees to clear or mountains to terraform, and the player must physically place everything that they want to exist. That means having a lot of suitable building blocks to make your floors out of, and at the beginning those are pretty scarce. Grand and unnecessary builds will have to wait until late game. Your best bet is wooden planks and lots of them. You'll realize just how painfully slowly trees grow when you're literally watching them, waiting for them to pop up to immediately get chopped down. Make sure to give each tree the room it needs to mature and catch any saplings that may fall. A fancy storage area will have to wait, as you should prioritize keeping up with food production in the first few phases. Upon collecting the materials for a Nether Portal, you might worry that once you get to the other side, you'll be trapped on a tiny island of lava. Or that if you jump into the End Portal that it'll be you and the Ender Dragon, alone on an End island. However, both of these dimensions are unaltered and are as limitless as in vanilla Minecraft. All of your favorite biomes can still be found in the Nether, as well as Fortresses, End Cities will spawn endlessly; you'll just need a lot of blocks to bridge over the gaps until an Elytra is retrieved. If you need extra space or don't fancy farming the block for a while, then feel free to set up in one of the limitless dimensions instead. Blocks aren't the only thing to pop up on your little island. Animals of all sorts will spring to life and be yours to deal with. In the tutorial section of the game, the player is always blessed with a pig. It may be tempting to slaughter it as so far, there's been no food. Resist the urge, and instead, build it a little platform and include a fence. A lot more farm animals will turn up in the Plains phase, but that won't be all. Later on, it won't be so hard to keep the populations afloat, but until you've got two of each animal on your flying Ark, they need constant supervision as they tend to get themselves killed. And if you get eight phases in and realize there hasn't been another sheep for some time, you might regret not crafting a pair of shears back then. You're not the only thing looking to end your food supply. Wolves will spawn in packs during the Plains stage and are natural predators of sheep. Players can fence off the animals far away from the Magical Block, with nothing touching the fence to allow the wolves to climb over. It's not a bad idea to build an arena around the Magical Block itself to protect the rest of your island from what turns up. Later in the phases, your chickens will be in trouble, as thieving foxes spawn in the Winter stage and can jump over fences to ravage your feather supply. Unless you have boats and leads on hand, the best thing to do is kill them as soon as they spawn, unfortunately. Or you can wait for some polar bears to spawn and hunt them down slowly. You aren't safe from the Magical Block either, as Monster Parties will begin a few times per stage, spawning a group of monsters relative to the theme you're currently in. The Ocean stage drops a pile of Drowned on your doorstep and Guardians later on. If you're very organized, a pit of water can be set up prior to this invasion, and the mobs can be kept as creepy pets. Beware of the flying tridents, though. Similar to raids on villages, Evokers and Vex can appear too. Prepare for this by crafting a shield as soon as possible. Having a bow can mean you can pick off Vex from a distance while out of their aggro range. These parties are always announced with a sinister voice and message, so get ready. Speaking of Monster Parties, the Nether stage is a particular problem when it comes to this. When everything you've worked so hard to produce is flammable, and some Blaze spawns, it's a game-ending combination. The best advice is to build a flameproof arena around the Magical Block when the Nether stage approaches. A building with enough space for a Ghast to show up, but made from stone or something similar. Make sure there's an easy way to get out in an emergency, and shut it off behind you. Have flame-resistant gaps between areas of your island to stop fire from spreading if there's an accident, and keep a bucket of water on hand to dump across the floor. A great way to rid yourself of malicious guests is to simply knock them into the void. Enemies much bigger than yourself (and better equipped) can be quickly dealt with this way. Having a hole into the nothingness below is a good strategy for when something arrives, and you're grossly underprepared. Be sure to stand facing the hole of doom to knock back enemies into it and not fall yourself. Eventually, Elytra will be obtainable, so start farming plenty of Sugar cane early on for rockets, meaning the edge will no longer be a danger to you. So, you've walked off of the edge of your floating space island, or maybe an unexpected Creeper blew up behind you, and you're free-falling into the chasm. A great way to save yourself next time is to make an infinite water source using three buckets of water and then waterlog the blocks on the edges of your island. By pouring water onto a slab, a waterfall will form under it for hundreds of blocks down. Do this at random points throughout your floor plan, and regardless of how you end up in the void you should always be able to skydive towards a waterfall and swim back up to safety. Later in the game, having lots of these streams may be unnecessary as you'll likely have multiple floors. You may be tempted to light up every inch of the world with torches to keep you and your animals safe at night. However, you're going to miss out on some serious loot and experience if you don't build a mob farm. It should be far enough away (up to 120 blocks) from the Magical Block that monsters will still spawn, but without the sound of their moaning getting annoying in your everyday life. Mob farms usually require a lot of Cobblestone and wood, so stock up. The items that can drop include armor, full iron ingots, carrots, potatoes, enchanted weaponry, and precious gunpowder. You'll need stacks of this for firework rockets later on. One Block Skyblock is a popular Minecraft map that was released in 2018 but has since evolved into alternative map designs and even mods. If you want to play this map, here's everything you need to know to download, install, and play the One Block map in Minecraft Bedrock. One of the best things about Minecraft is that it has an extremely active community that keeps making new content for the game as its developers continue to work on official updates. You can make several resources for Minecraft, from mods and maps to shaders, texture packs, songs, resource packs, and more. One Block Skyblock is among the most adored maps in the Minecraft community. It involves you spawning on top of a single block in the sky, with your objective being to pave your way toward a potential exit. As you can probably guess, the concept for this map has been derived from the ever-popular Skyblock map, and both these maps are now used in many online servers or as game modes. So, if you're wondering how to play One Block in Minecraft Bedrock, here's all you need to know. MojangOne Block Skyblock can be more challenging than Skyblock. How to download One Block Skyblock in Minecraft Bedrock There are three ways to play One Block Skyblock in Minecraft Bedrock. Let's explore all of them: How to get One Block Skyblock from the Minecraft Marketplace You can purchase an iteration of the One Block Skyblock map from the Minecraft Marketplace for 310 Minecoins or \$2.14. Made by Nitric Concepts, One Block Skyblock is one of the highest-rated maps on the Minecraft Marketplace, with more than 153,398 ratings and an average rating of 4.5/5. In addition, the map is updated for Minecraft 1.20. Here's how to purchase and play on the One Block Skyblock map by Nitric Concepts: Open your copy of Minecraft: Bedrock Edition. Sign into your Xbox Live or Microsoft Account. Navigate to the One Block Skyblock page in the Marketplace. Click on "Get this item". Make the payment required for the map. Once the process is complete, you can enjoy the One Block Skyblock map by Nitric Concepts. How to download One Block Skyblock for free in Minecraft Bedrock You can download the One Block Skyblock map for free in Minecraft Bedrock using one of the many modding and Minecraft resource websites on the internet. Vanilla Tweaks and Planet Minecraft are popular choices for Bedrock Edition, and here's a One Block map named One Block (BEDROCK EDITION) from the latter, created by Technoblade NVRD. Another can be found on 9Minecraft, fully updated for Minecraft 1.20. You can find others on these websites as well. Here's how to download One Block Skyblock from either of these websites: Navigate to the website and map you've chosen to download. Download the file for the map. If the downloaded file is a .mcworld file, all you need to do is open it and it will automatically be installed into Minecraft Bedrock. If it's a .ZIP, you'll need to extract the file into your game's "minecraft\Worlds" folder using Winrar or 7-Zip. The default path for this folder is C:\Users\yourusername\AppData\Local\Packages\Microsoft.MinecraftUWP_8wekyb3d8bbwe\LocalState\games\com.mojang\minecraft\Worlds. Downloading alternative versions of maps from modding websites is a great way to avoid paying for them in Minecraft. MojangYou can buy the updated One Block Skyblock map by Nitric Concepts on the Minecraft Marketplace. How to join the official OneBlock Bedrock Server Finally, you can join the official OneBlock Bedrock Server to play online with other players or your friends. You don't need to download any resources for this to work. All you need is the server's IP address, and you can join the server. Here are the steps to join the OneBlock Bedrock Server: Open your copy of Minecraft Bedrock. Select "Play". Select "Servers" Scroll down and select "Add server". copy and paste the IP address of the OneBlock Bedrock Server into the "Server Address" bar: bedrock.oneblockmc.com Hit "Play", and you'll connect to the server. That's all you need to know about how to play the One Block Skyblock map in Minecraft Bedrock. For more on Minecraft, check out these articles: How to get a saddle in Minecraft | How to grow mushrooms in Minecraft | How to change Minecraft username | How to make a bed in Minecraft | How to dye leather armor in Minecraft | How to cure a Zombie villager in Minecraft | How to make and use a beacon in Minecraft One Block is one of the most popular Minecraft maps ever created. It starts you standing on One Block in the sky with nothing else around you. This is our complete guide on how to download and install the One Block map for Minecraft. This will let you start playing One Block and enjoying all of the unique features this Minecraft map has to offer. What is the One Block map? The One Block map is a custom Minecraft map that offers a unique gameplay experience. In this map, you start on a single block, and as you mine it, new blocks appear, allowing you to build and expand your initial starting area from just that one block to as large as you want. It's a concept that challenges your survival and building skills in a confined space, making every action count. Click here to download One Block! What this One Block guide will cover: Download One Block The first step of learning how to play One Block is to download the map. To do this, you'll need to visit the official download page. This is on CurseForge, and you will be able to find all of the different versions of One Block on this page. Once you're on the download page, navigate to the "Files" section in menu bar. Here, you'll see all of the versions of One Block. Click the three dots next to the version of One Block that you want to download and click "Download File". The One Block map will start downloading. After the download is complete, locate the file you downloaded. Usually, it will be found in your "Downloads" folder. Right-click on the file and choose the "Extract All" option. A dialogue box will appear. Click "Extract", and the One Block map will unzip creating a folder. Open the extracted folder and continue opening the folders within the extracted folder until you find files and folders with names such as data, DIM1, region, etc. Then, click the back arrow in the File Explorer. Finally, drag-and-drop the folder that contains all of the files and folders show above to your desktop. Once it is there, you should be able to open the folder on your desktop and instantly see the DIM-1, region, data folder, etc. If you do, you are ready to install the One Block map into Minecraft! To install One Block, we will need to open your .minecraft folder. To do this, open your Minecraft Launcher and click on the "Installations" tab at the top. Hover over the version you intend to use for "One Block" and click on the folder icon. This will open up your ".minecraft" folder. In the ".minecraft" folder, locate the "saves" folder. Drag and drop the "One Block" folder from your desktop into this "saves" folder. This is what installs One Block into Minecraft. Before launching the game, double-check the "One Block" folder in the "saves" directory to ensure it contains the necessary files and folders. If everything looks good, you're ready to play. Below is a screenshot of what should be within the One Block folder as soon as you open it in your saves folder. Now, we just need to play Minecraft using the installation you added One Block to. Luckily, One Block is a map, so not modded installations or anything like that is needed. On the Minecraft main menu, click on "Single Player." You should see "One Block Original" listed among your saved worlds. Double-click on it to launch the map. Once the map loads, you'll find yourself standing on a single block. From here, the world is yours to expand and build upon. Mine the block beneath you, and new blocks will appear, allowing you to build out your world from this single starting point. The "One Block" map offers a unique and challenging Minecraft experience that tests both your survival and building skills. With this step-by-step guide, you're now equipped to download, install, and dive into this fascinating world. So go ahead, start mining that one block, and let your creativity flow! Frequently Asked Questions No, the "One Block" map is usually updated to be compatible with the most recent versions of Minecraft pretty quickly, and it supports versions back to 1.13.2. Be sure to always check the compatibility information on the download page to ensure it matches your Minecraft version. You can download the "One Block" map from its official download page, often hosted on platforms like CurseForge or Modrinth. Yes, you can play the "One Block" map with friends by hosting it on a Minecraft server. We recommend using SimpleGameHosting to start your server. No, the "One Block" map doesn't require any additional mods to play. This is one of the best features of One Block as compared to other SkyBlock style mods and modpacks. While it's possible to add other mods, be cautious as some mods may not be compatible with custom maps and could cause issues. Jess Keep Reading Also, as you mine it, the block regenerates into a new type of block, so after being a dirt block it will turn into a wood block and so on. There are several phases in which different types of blocks can appear. Not clear on the concept? Check this FAQ and the video below to understand how the map works. There are 10 phases in total. Plains, Underground, Snow Biome, Ocean, Jungle Dungeon, Desert, Nether, Idyll, Desolation and the End. Each phase includes a set of blocks, items and monsters appropriate for the setting. However, random blocks from previous phases may also appear. There are currently about 7,000 blocks. Most phases have about 700-800 blocks, except for the last few, which are a bit shorter. After mining the last block of the tenth phase, an incomplete portal to the End will appear below the infinite block. After that, the infinite block will continue to create blocks. There are an infinite number of blocks that can appear, and after the tenth phase, they are randomly selected from the 10 phases. After the tenth phase, the items in the chests and the monsters that appear are also all randomly drawn from all phases. Each block has a certain percentage chance of appearing. A certain set of mobs is set to appear, which includes most hostile mobs, all neutral mobs (except for the trader llama) and all passive mobs (except for the bats). Bosses and utility monsters (like the iron golem) will not be spawned by the infinite block. All monsters that can be generated by the infinite block will be generated at least once. After that, there are random appearances, so you can pick them up again. There are normal chests, which contain only random items from the current phase. After phase 3, the second type of chest can appear, which can contain items from the current phase, as well as from the previous and future phases. Yes, it is. Nether blocks and obsidian can be obtained in phase 7 and later phases. Lava buckets may be available earlier in some chests, but you have to be incredibly lucky to get enough to create a portal to the Nether before you reach Phase 7. That's pretty much what you want it to be. You should be able to do pretty much anything you can do in a normal Minecraft world, given enough time. A good objective might be to defeat the Ender Dragon. But it could also be as simple as building the largest celestial castle that has ever existed. It's up to you ! One block Original : One Block Reborn : Guide : Install Minecraft map